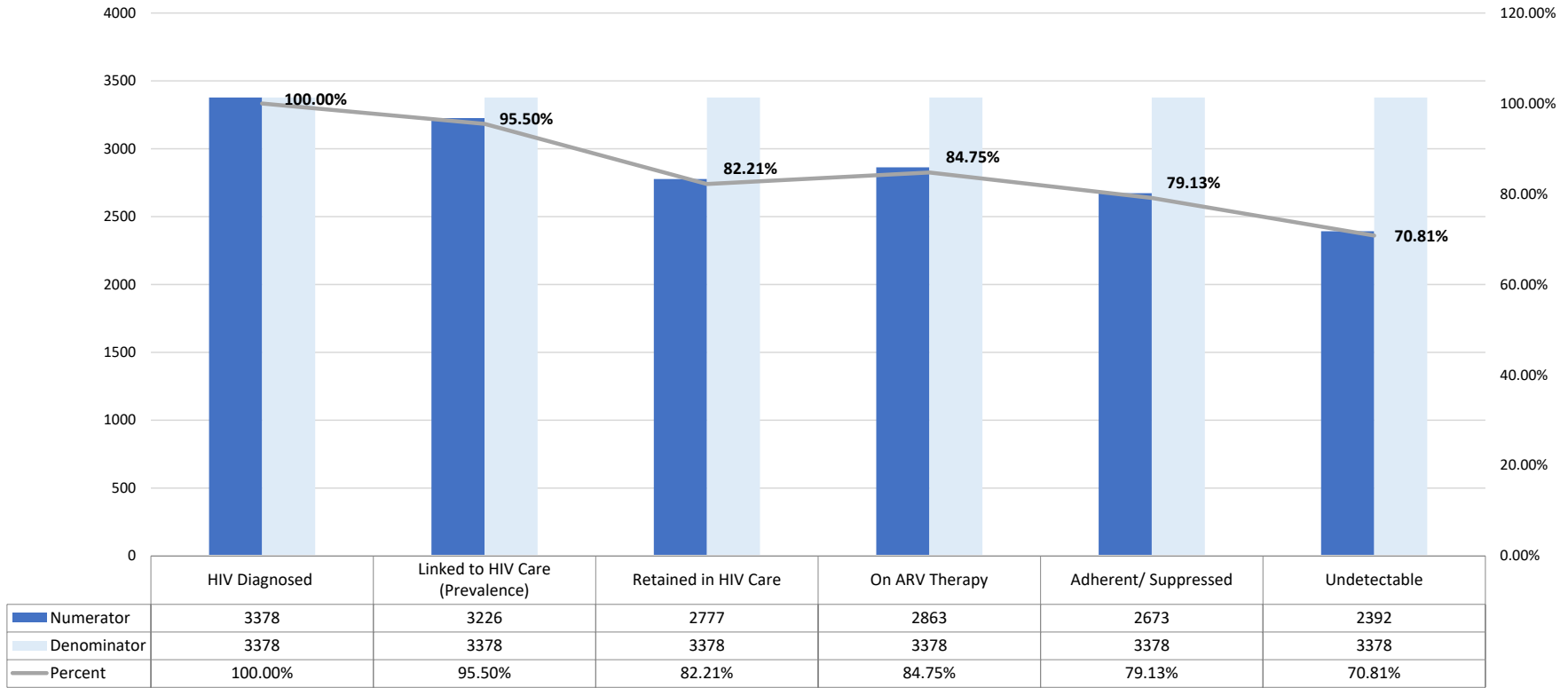


RWPB HIV Care Cascade Calendar Year 2017



Definitions

HIV Diagnosed: HIV positive persons who received any RW service in 2017.

Linked to HIV Care (Prevalence): HIV positive persons who received any RW service in 2017 with a documented lab test, doctor visit or ARV use in the review time period.

Retained in HIV Care: HIV positive persons who received any RW service in 2017 with a documented lab test, doctor visit or ARV use in the first 6 months and second 6 months of the time period, or one documented lab test indicating viral suppression in the time period.

On ARV Therapy: HIV positive persons who received any RW service in 2017 with documented ARV use or whose last viral load of the review time period was Adherent/Suppressed or Undetectable.

*Adherent/Suppressed: HIV positive persons who received any RW service in 2017 whose last viral load review time period was <200 C/mL.

Undetectable: HIV positive persons who received any RW service in 2017 whose last viral load review time period was <50 C/mL.

Definitions derived from Arizona Part A Maricopa County, utilized by Arizona Part B, Nevada Part A and Nevada Part B